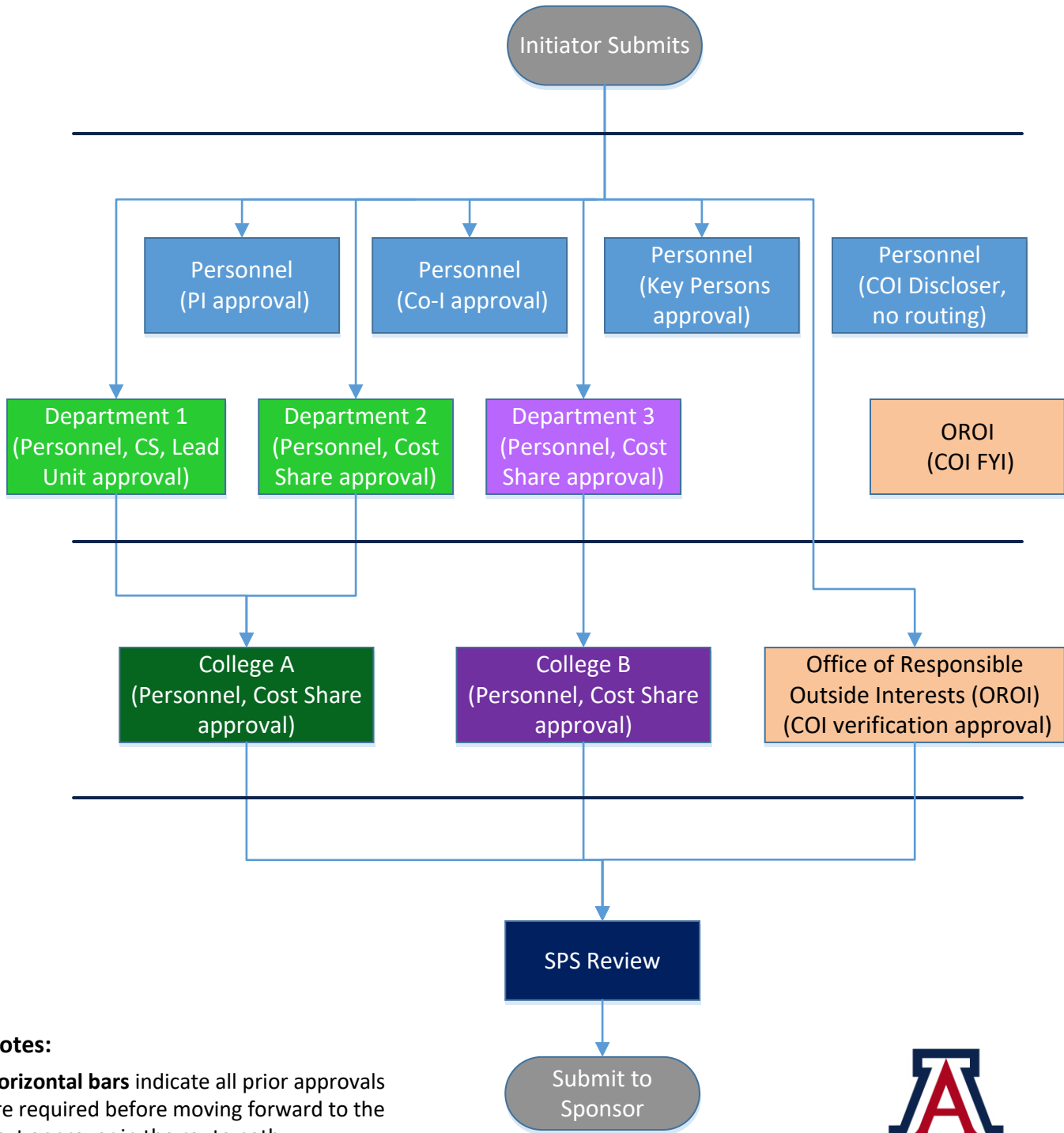


# UAccess Research Proposal Routing Flowchart



**Notes:**

**Horizontal bars** indicate all prior approvals are required before moving forward to the next approver in the route path.

**Ad Hoc Routing for FYI or Acknowledge** action does not interrupt default routing.

**Ad hoc Approve** action must be satisfied before routing continues.

**Conflict of Interest (COI) Discloser** names and email addresses are collected during proposal development for integration with the eDisclosure system but do not require routing approvals. Email [sponsor@arizona.edu](mailto:sponsor@arizona.edu) to add or remove COI Disclosers from submitted "Institutional Proposals" or awards.

**Cost Share Departments or Colleges** included in a project solely for cost share commitments will approve at the same time as departments and colleges with project personnel.

